

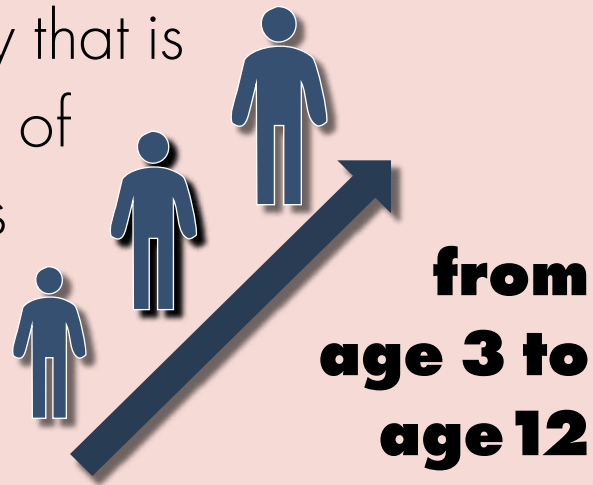
MRIs can be challenging for autistic individuals with intellectual disability.



This means less is known about their brain development.

The **Autism Phenome Project** at the UC Davis MIND Institute

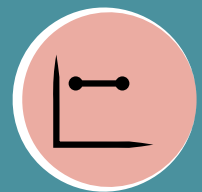
is a research study that is following a group of autistic children as they grown up



30% of participants are autistic children with intellectual disability

The study team developed techniques to collect MRI scans on individuals with all levels of intellectual ability.

The researchers found 3 groups of kids:



IQs in the **average range** throughout childhood



IQs in the **intellectual disability range** throughout childhood



IQs in the **intellectual disability range as toddlers** and the **average range by age 8**

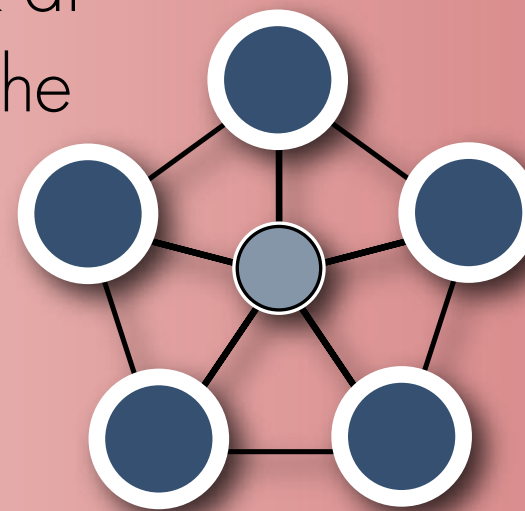
Researchers found a network that is different between those whose

IQ changed over time

and those whose

IQ stayed the same over time

The study used MRIs to look at networks in the brain.

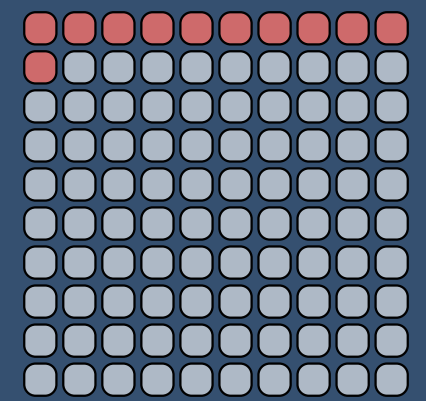


Networks are parts of the brain that work together to do a job.

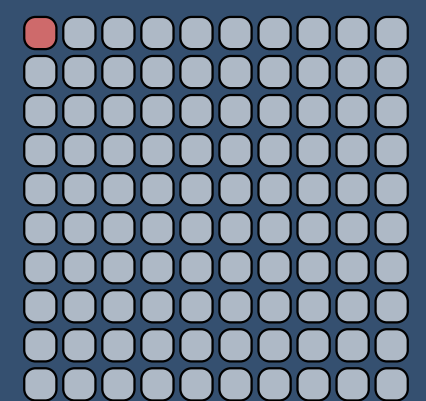


This research might help us to predict patterns of IQ change across childhood and develop targeted interventions to help children with intellectual disability.

Out of **47,400** autistic individuals in the **National Database for Autism Research...**



Only **11%** had an IQ less than 85



Less than **1%** of those had brain scans